

# Senior Housing Census and Operations Update



December  
2022

# Introduction

For over 25 years, Move-N Software has been focused on creating exceptional software exclusively for the Senior Housing industry, designed to increase census and revenues, and enhance resident care. As the industry has changed and technology has advanced, so has Move-N. Our goal is to give our customers more than they expect. During this COVID-19 crisis, as a service to the industry, we have been providing monthly statistics based on data aggregated from our small, mid-sized and large customers across the US and Canada, so that you may get a sense for the pandemic influence on the overall industry.

The information provided in this update consists of month to month, year to date data comparing the last six months of the previous and current year, as of December 31st.

## December Analysis

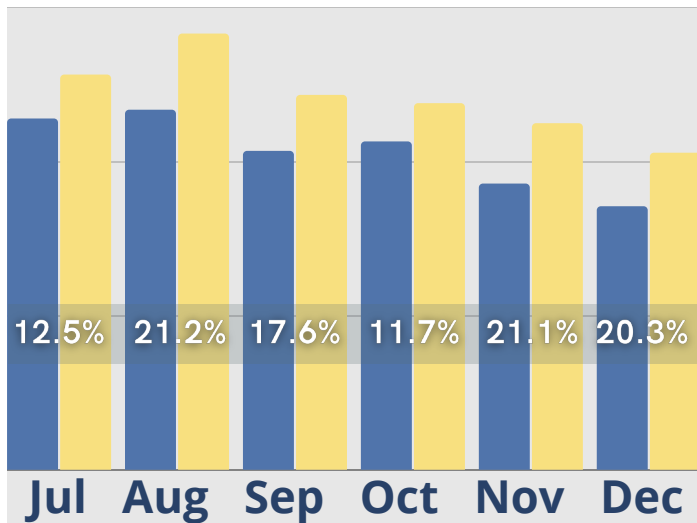
As expected, leads and tours declined during the holidays in December. However, lead totals were over 20% higher than in 2021, and tours were comparable to 2021. Census and cash receipts were both stable and move-ins were slightly improved from the previous year but there was not a significant change from November. Move-outs were reduced and over 5% below December 2021 and the number of days to convert tours to move-ins was still up, averaging 93 days in December but inquiry activity dropped again, and marketing outreach took a big dip compared to activity in the last 2 months. Revenues from recurring monthly charges including room and care fees were steady, with the only noticeable revenue drop occurring in ancillary service fees.

**Giving our customers more  
than they expect.**

# December Last 6 Months

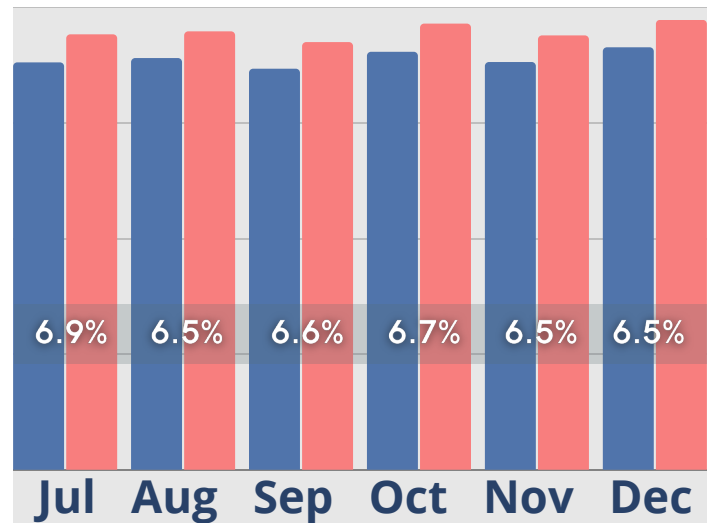
## Inquiries

● Last Year ● Current Year



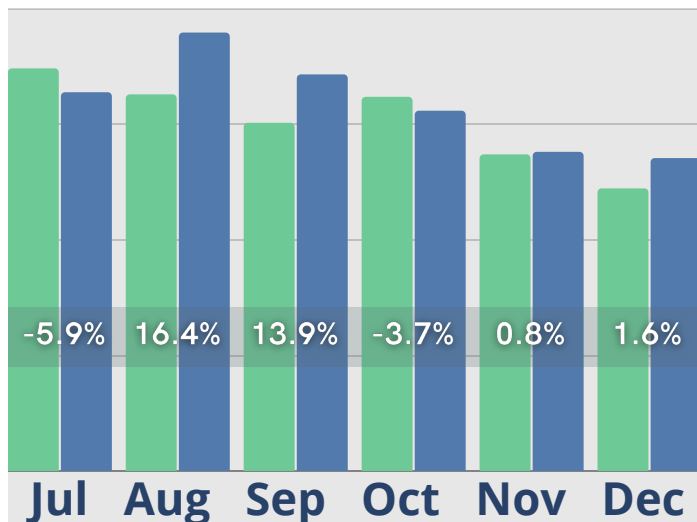
## Census

● Last Year ● Current Year



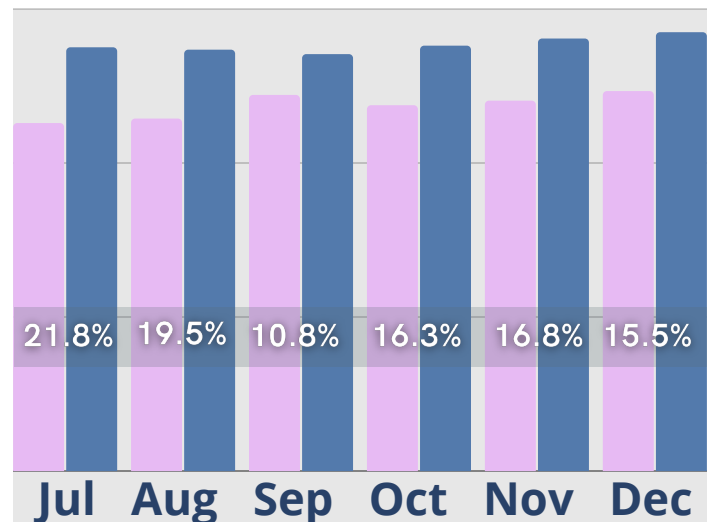
## Initial Tours

● Last Year ● Current Year



## Cash Receipts

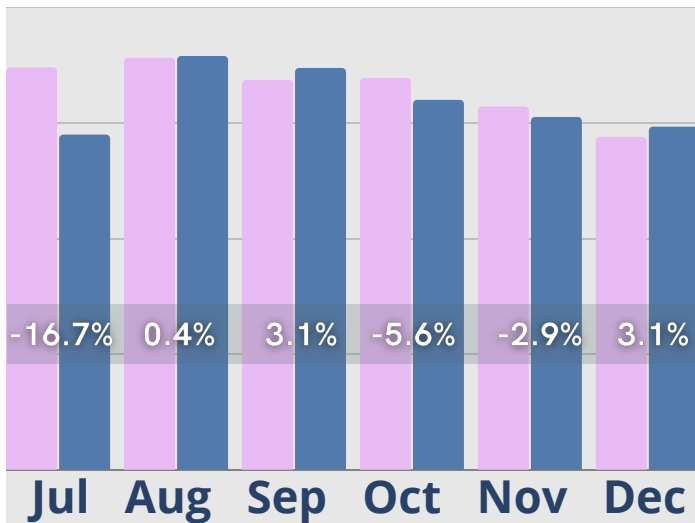
● Last Year ● Current Year



# December Last 6 Months

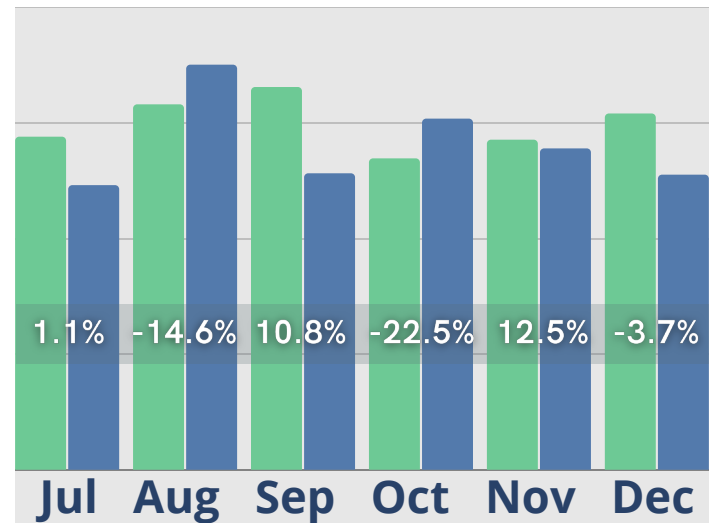
## Move-Ins

● Last Year ● Current Year



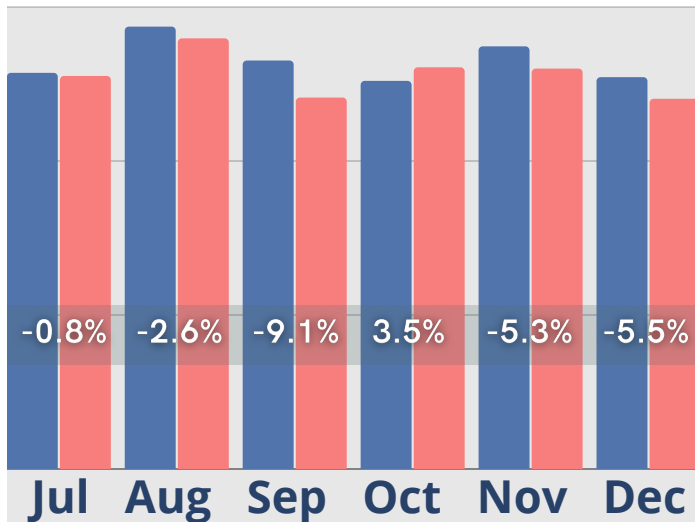
## Activity Completed-Inquiry

● Last Year ● Current Year



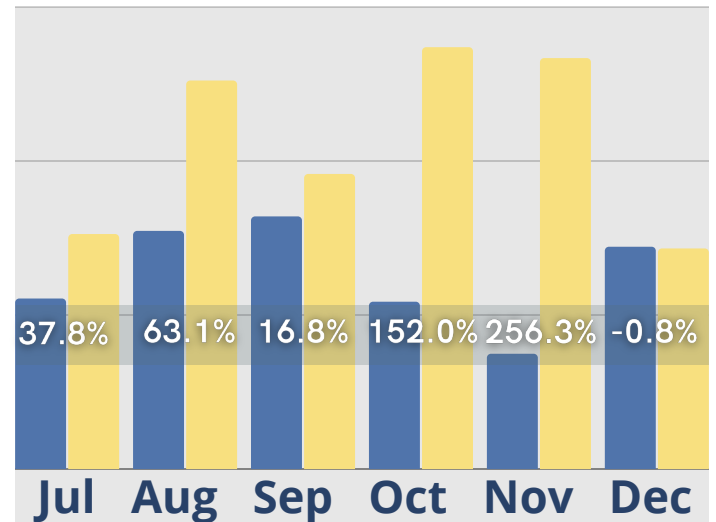
## Move-Outs

● Last Year ● Current Year



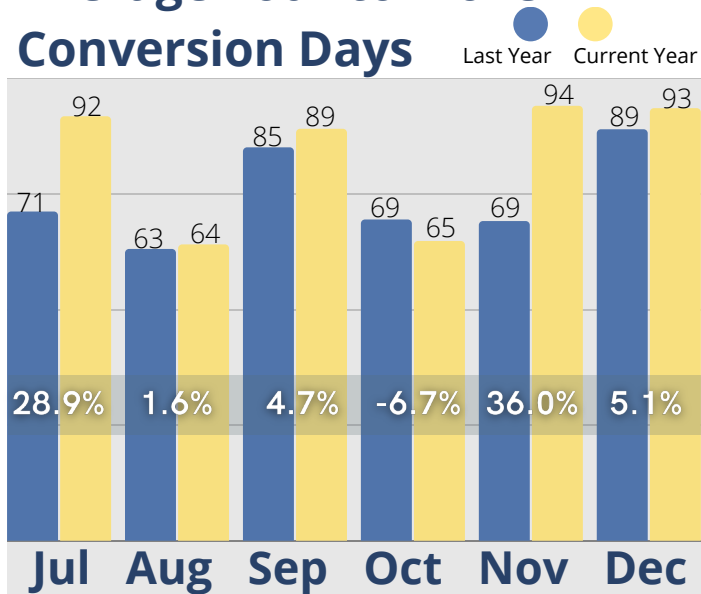
## Activity Completed-Marketing

● Last Year ● Current Year

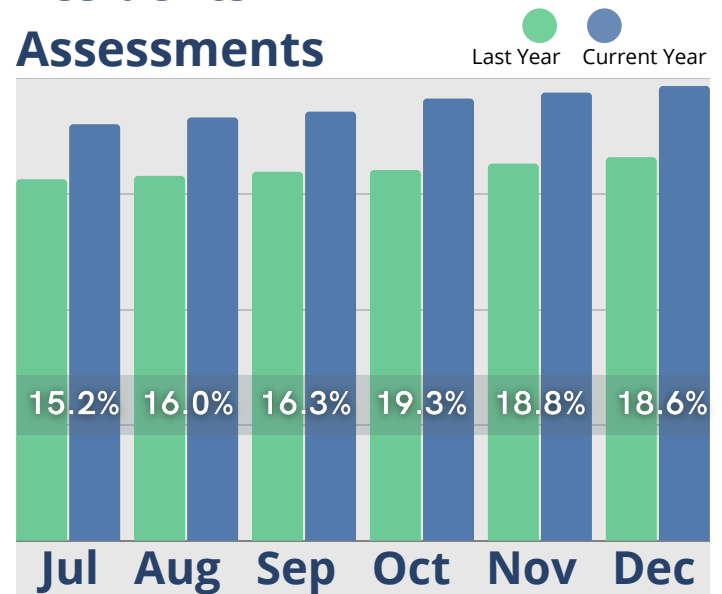


# December Last 6 Months

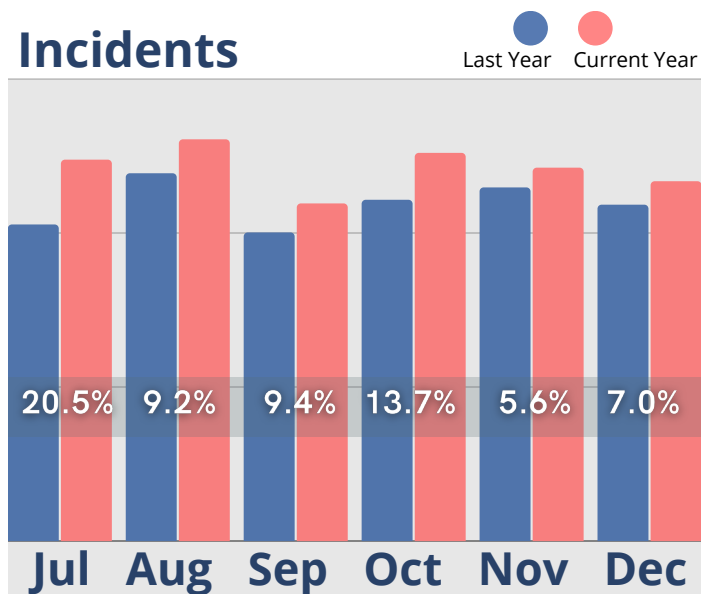
## Average Tour to Move-In Conversion Days



## Residents w/ Assessments

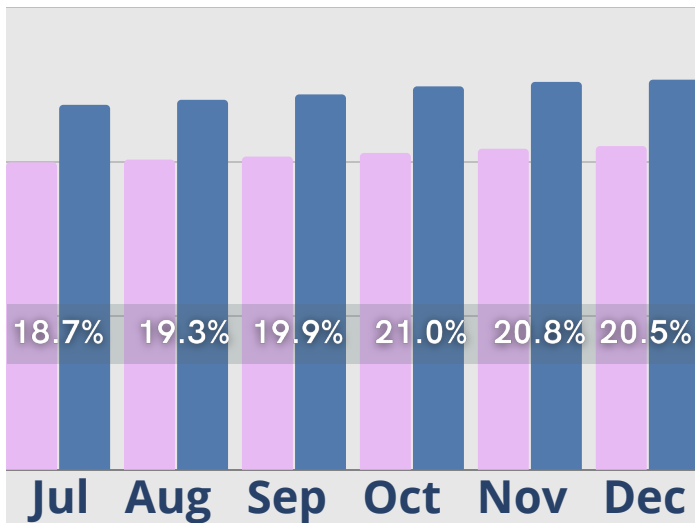


## Incidents

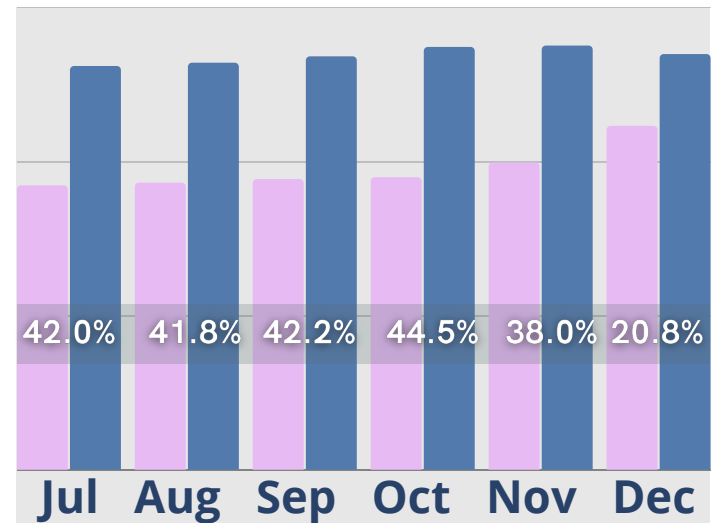


# December Last 6 Months

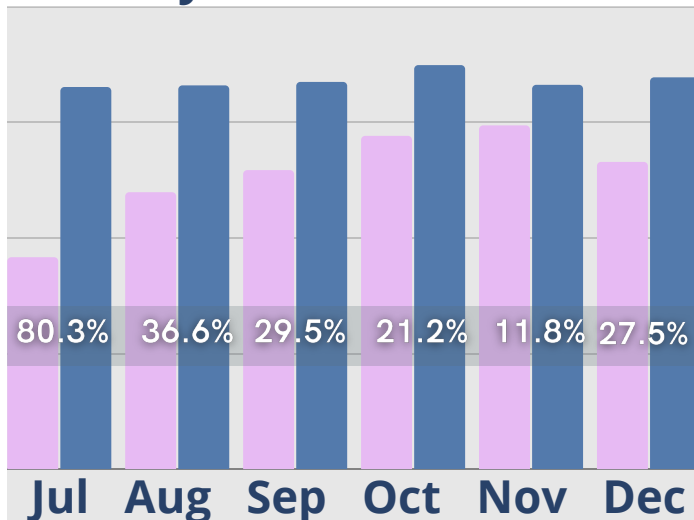
## Rent Roll Summary- Room Rate



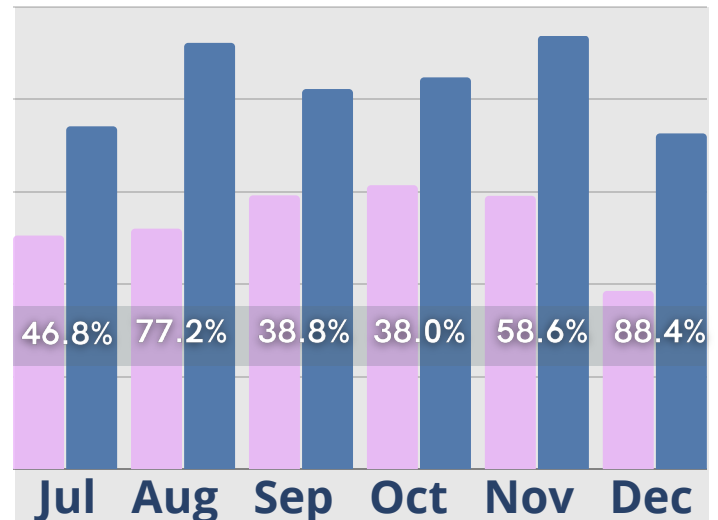
## Rent Roll Summary- Assessment Fee



## Rent Roll Summary- Monthly Fees



## Rent Roll Summary- Service Fee



● Last Year

● Current Year

Copyright © 2023 Move-In Software, Inc. All rights reserved. No part of this report may be reproduced or transmitted in any form without written permission from Move-N Software, Inc.



 **2700-3 Brown Trail  
Bedford, TX 76021**

 **817-282-7300**

 **[www.move-n.com](http://www.move-n.com)**

 **[info@move-n.com](mailto:info@move-n.com)**