

# Senior Housing Census and Operations Update



September  
2024

# Introduction

For more than 28 years, Move-N Software has been focused on creating exceptional software exclusively for the Senior Housing industry, designed to increase census and revenues, and enhance resident care. As the industry has changed and technology has advanced, so has Move-N. Our goal is to give our customers more than they expect. As a service to the industry, we have been providing monthly statistics based on data aggregated from our small, mid-sized and large customers across the US and Canada, so that you may get a sense for how your communities compare to national averages.

The information provided in this update consists of month to month, year to date data comparing the last six months of the previous and current year, as of September 30th.

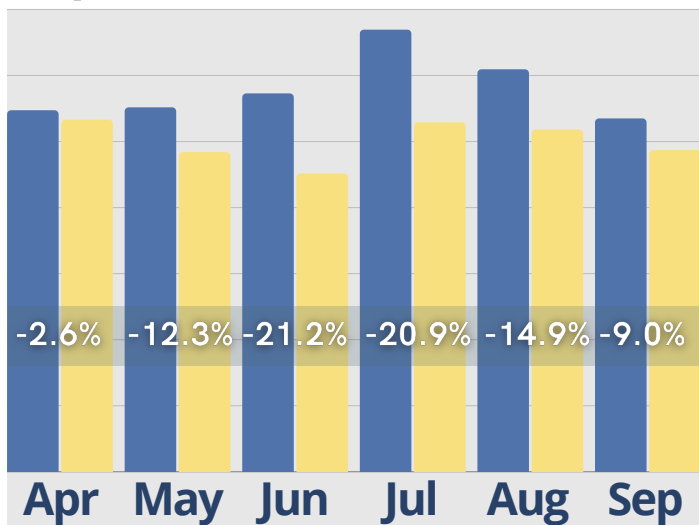
## September Analysis

Inquiries showed positive momentum with a 21% increase in September, driven by strong performance in July and August, leading to a rise in census. Despite a slight industry-wide dip in September, the steady trends over the last six months signal resilience. The average tour-to-move-in timeline extended to 94 days, likely due to the increasing time it takes for new residents to sell their homes, a common trend across U.S. markets. This reflects the ongoing demand and gradual conversion processes, with 90-120 day conversions supporting future growth.

# September Last 6 Months

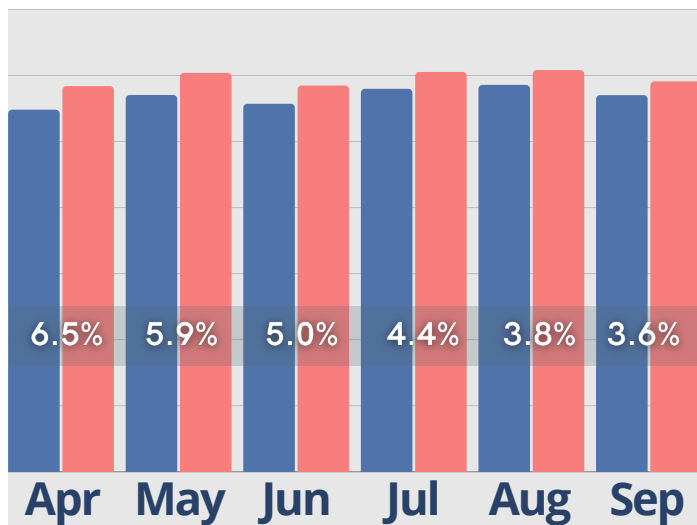
## Inquiries

● Last Year ● Current Year



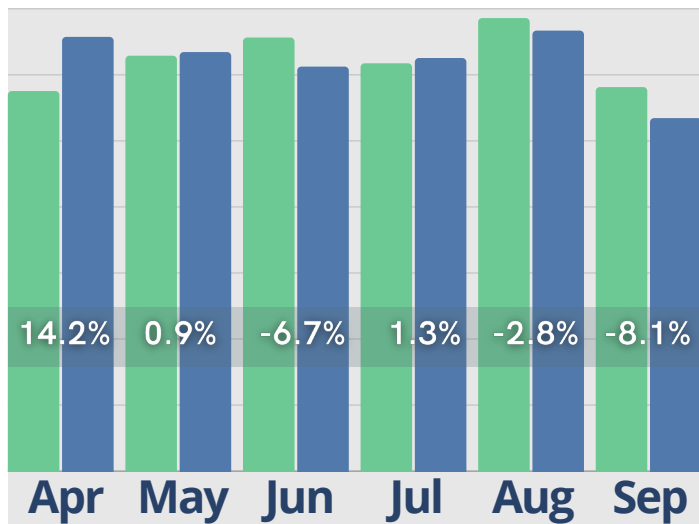
## Census

● Last Year ● Current Year



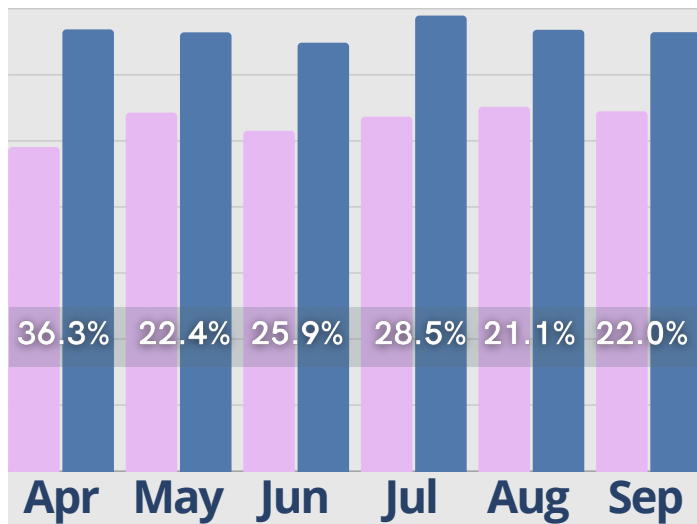
## Initial Tours

● Last Year ● Current Year



## Cash Receipts

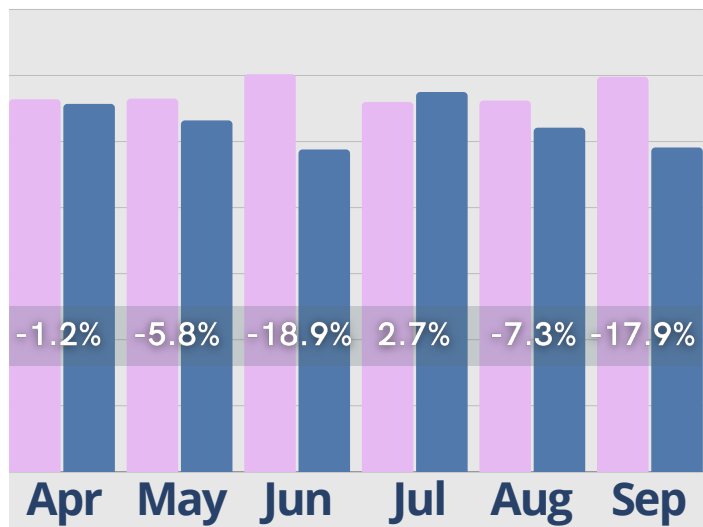
● Last Year ● Current Year



# September Last 6 Months

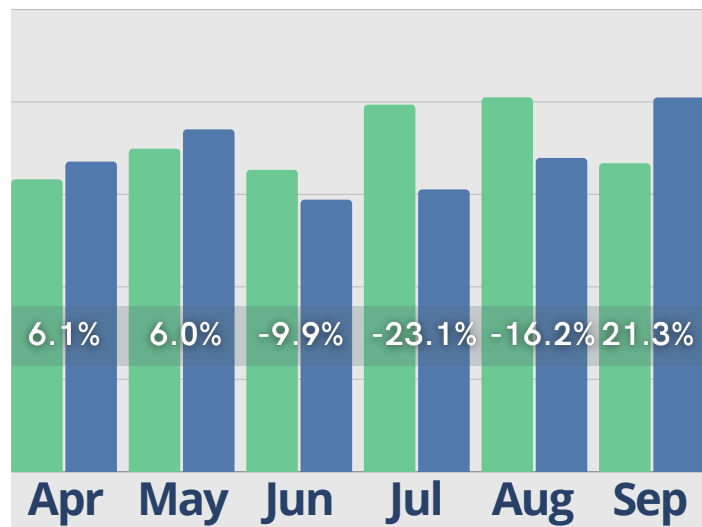
## Move-Ins

● Last Year ● Current Year



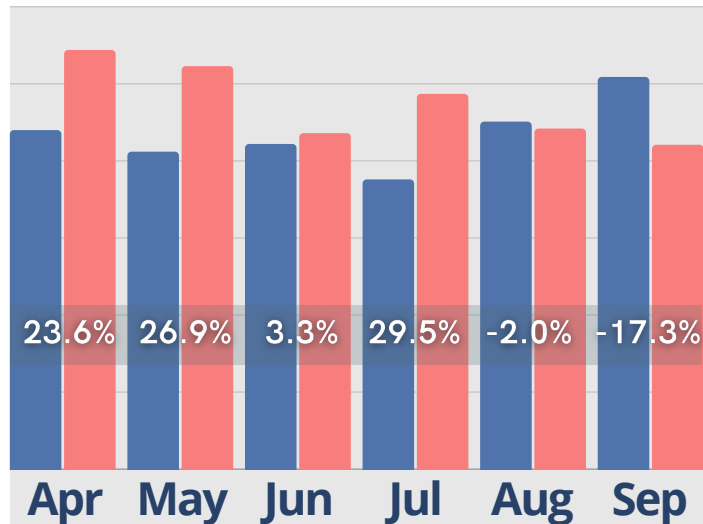
## Activity Completed- Inquiry

● Last Year ● Current Year



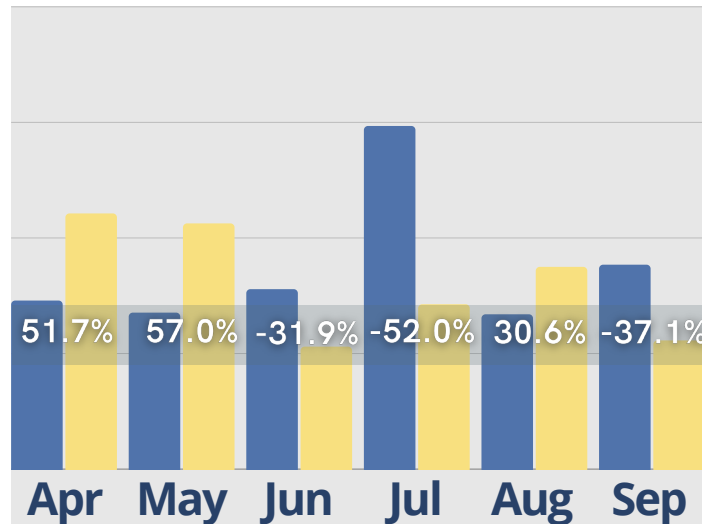
## Move-Outs

● Last Year ● Current Year



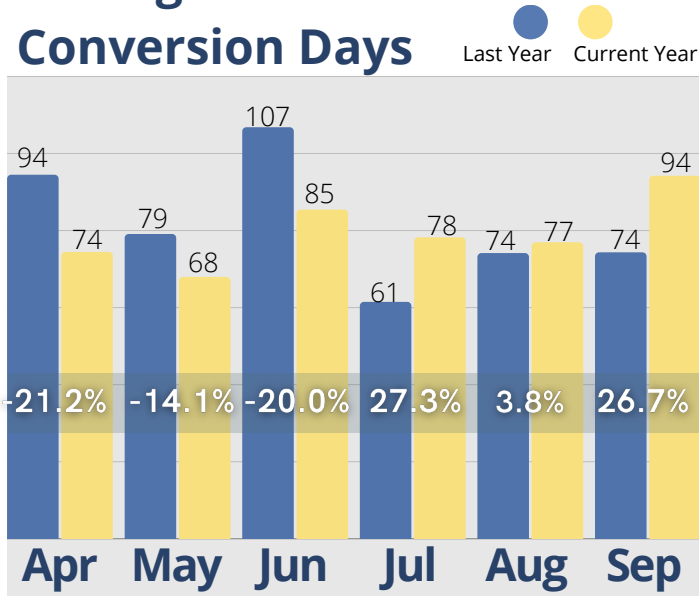
## Activity Completed- Marketing

● Last Year ● Current Year

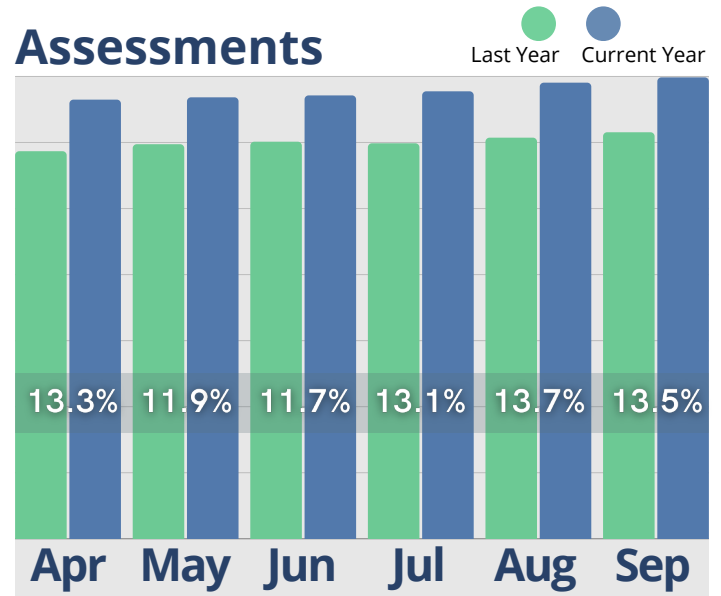


# September Last 6 Months

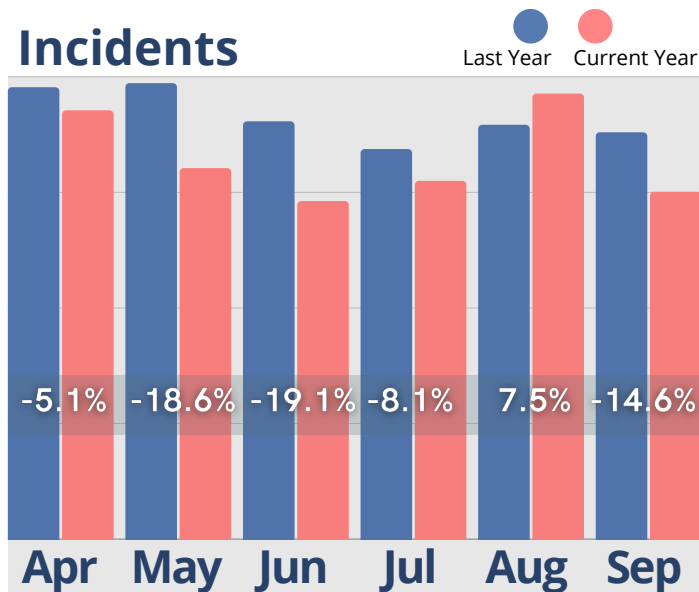
## Average Tour to Move-In Conversion Days



## Residents w/ Assessments

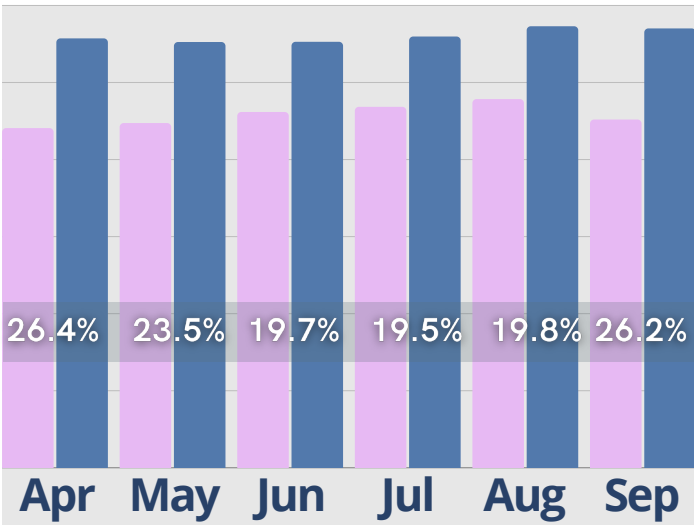


## Incidents

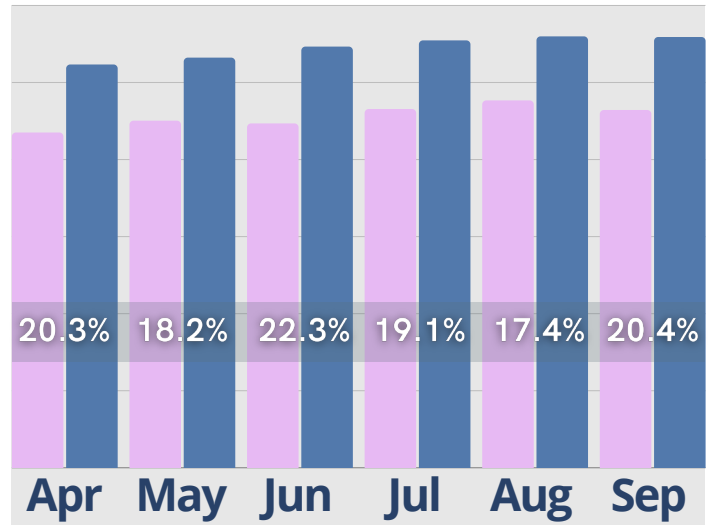


# September Last 6 Months

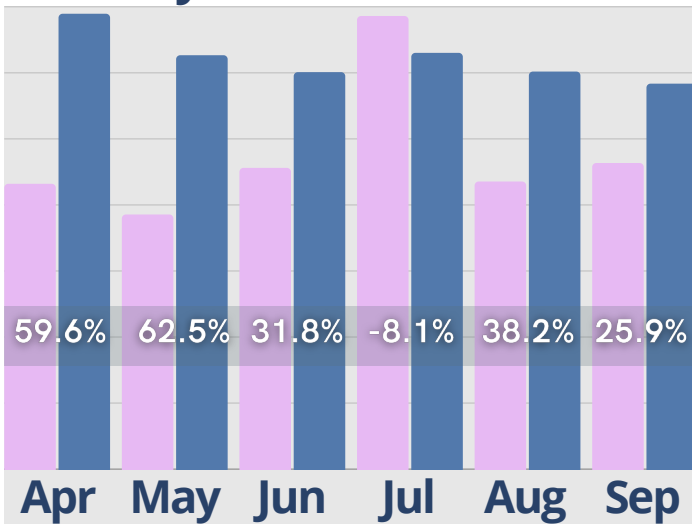
## Rent Roll Summary- Room Rate



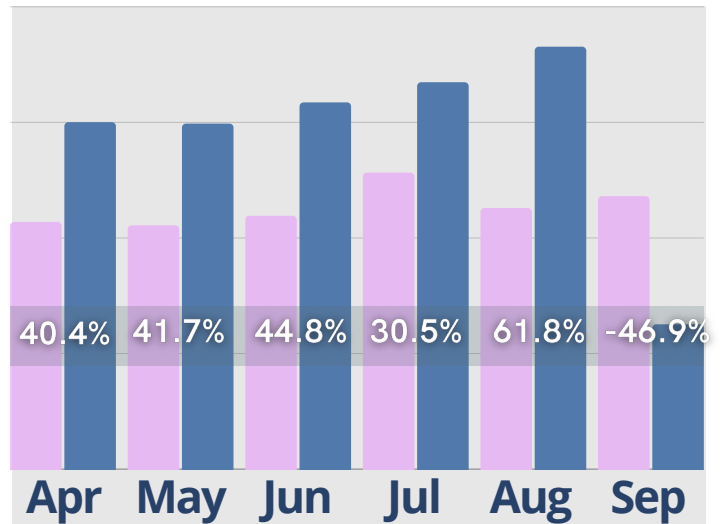
## Rent Roll Summary- Assessment Fee



## Rent Roll Summary- Monthly Fees



## Rent Roll Summary- Service Fee



● Last Year

● Current Year

Copyright © 2024 Move-In Software, Inc. All rights reserved. No part of this report may be reproduced or transmitted in any form without written permission from Move-N Software, Inc.



 **2700-3 Brown Trail  
Bedford, TX 76021**

 **817-282-7300**

 **[www.move-n.com](http://www.move-n.com)**

 **[info@move-n.com](mailto:info@move-n.com)**