

# Senior Housing Census and Operations Update



November  
2024

# Introduction

For more than 28 years, Move-N Software has been focused on creating exceptional software exclusively for the Senior Housing industry, designed to increase census and revenues, and enhance resident care. As the industry has changed and technology has advanced, so has Move-N. Our goal is to give our customers more than they expect. As a service to the industry, we have been providing monthly statistics based on data aggregated from our small, mid-sized and large customers across the US and Canada, so that you may get a sense for how your communities compare to national averages.

The information provided in this update consists of month to month, year to date data comparing the last six months of the previous and current year, as of November 30th.

## November Analysis

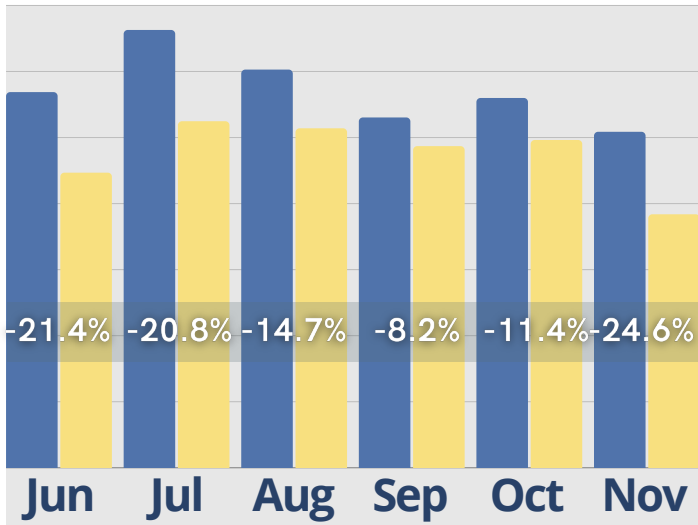
From November 2023 to November 2024, senior living communities experienced a 3.3% increase in census numbers, highlighting strong retention and sustained demand. Occupancy rates remained stable across communities, reflecting a consistent interest in available spaces. While the average time from tour to move-in continues to lengthen, this trend aligns with the rising days on market for home sales, suggesting broader market dynamics at play. Inquiries saw a decline of 24.6%, and tours experienced a slight dip compared to the previous year. Additionally, move-ins decreased both from October and in the year-over-year comparison. Despite these fluctuations, the communities maintain steady performance, supported by their ability to adapt to changing market conditions.

For a more in depth look into this our additional information, reach out to <https://move-n.com/contact-us/>

# November Last 6 Months

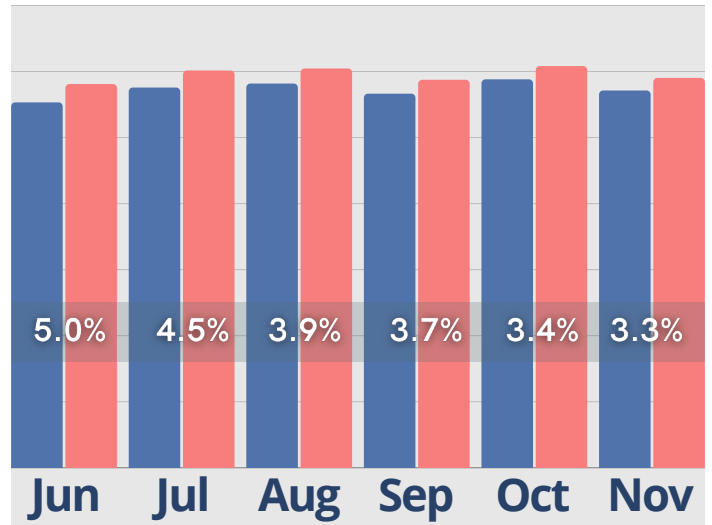
## Inquiries

● Last Year ● Current Year



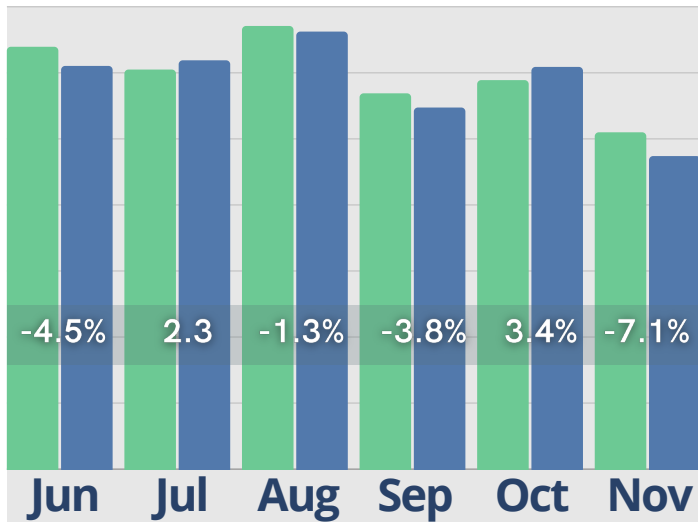
## Census

● Last Year ● Current Year



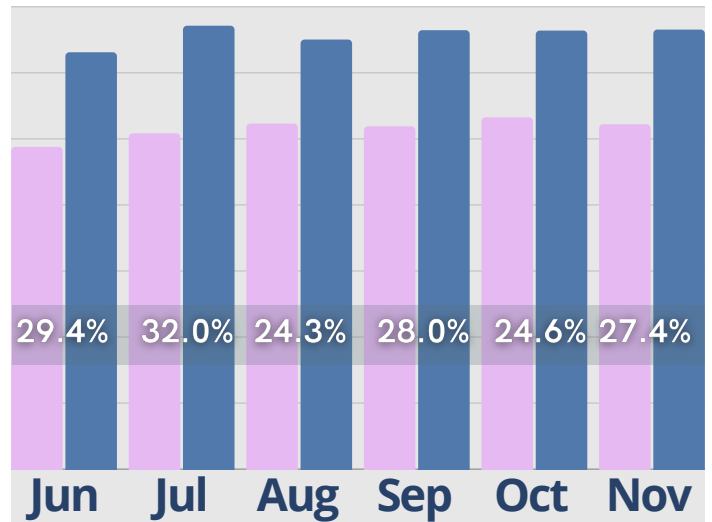
## Initial Tours

● Last Year ● Current Year



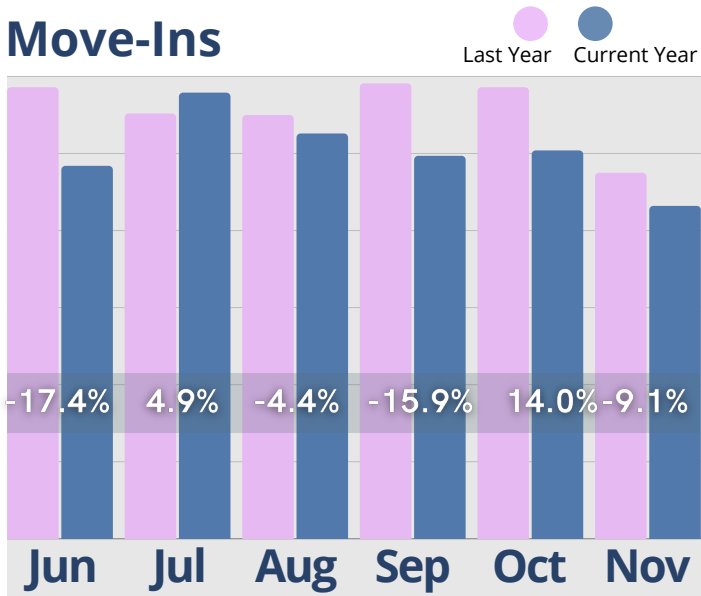
## Cash Receipts

● Last Year ● Current Year

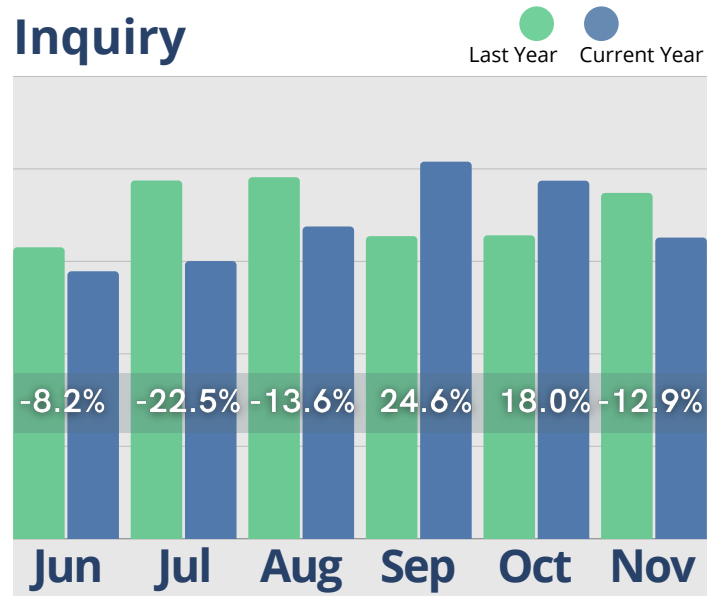


# November Last 6 Months

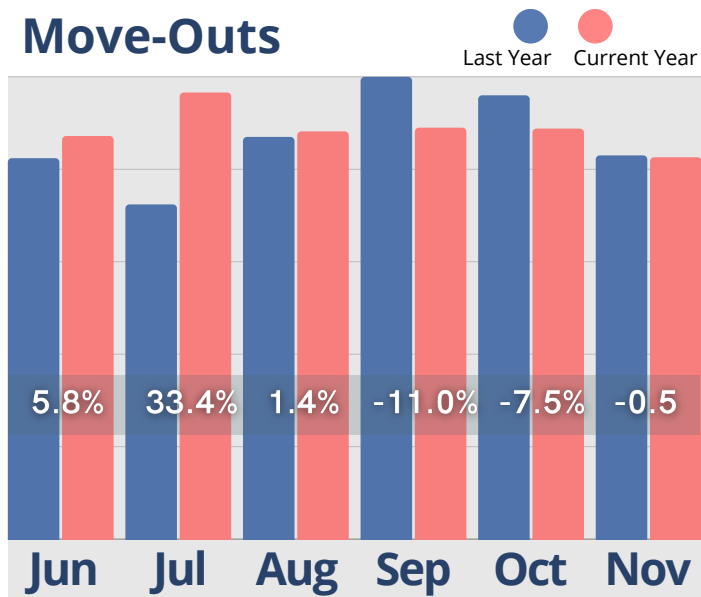
## Move-Ins



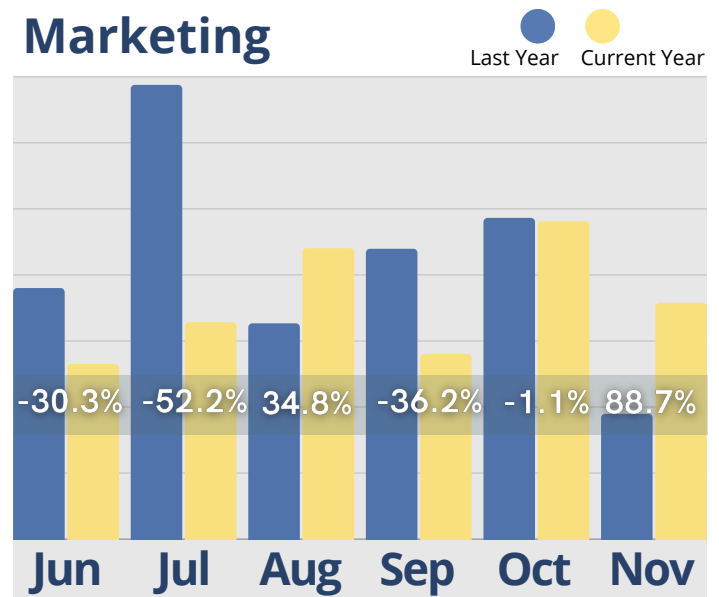
## Activity Completed- Inquiry



## Move-Outs

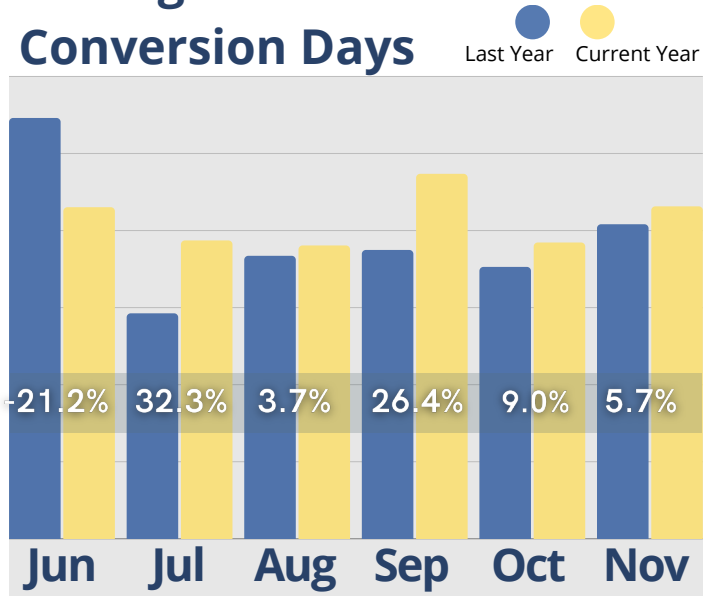


## Activity Completed- Marketing

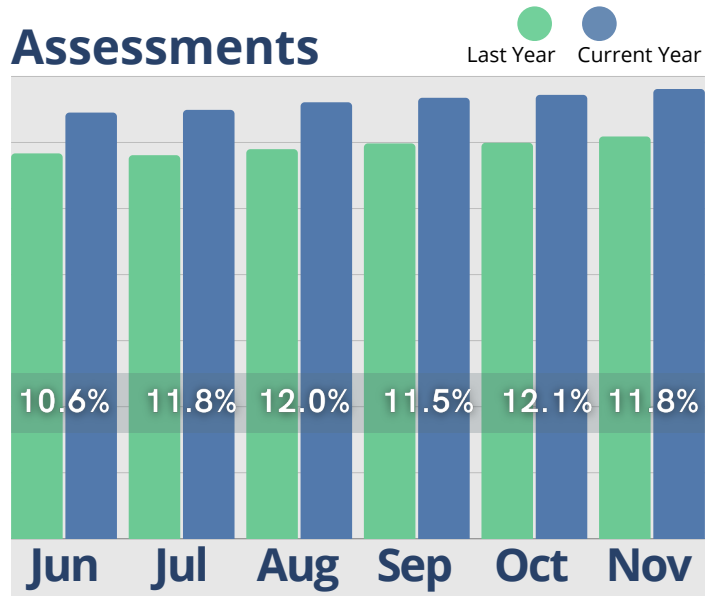


# November Last 6 Months

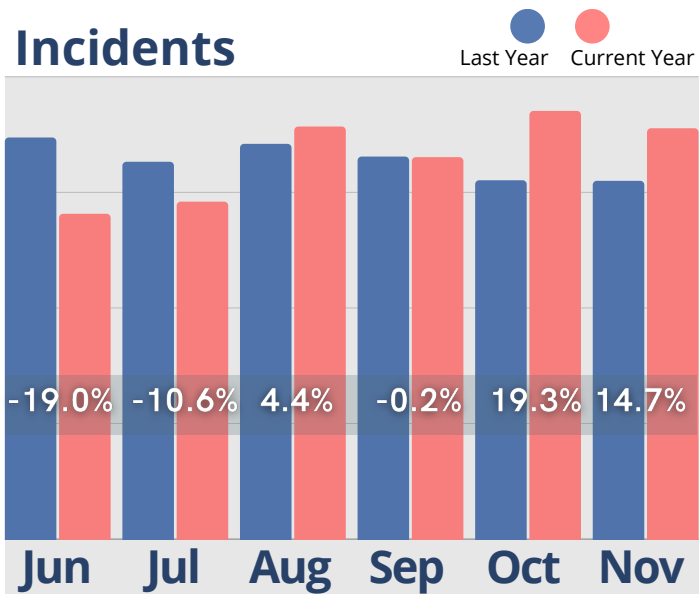
## Average Tour to Move-In Conversion Days



## Residents w/ Assessments

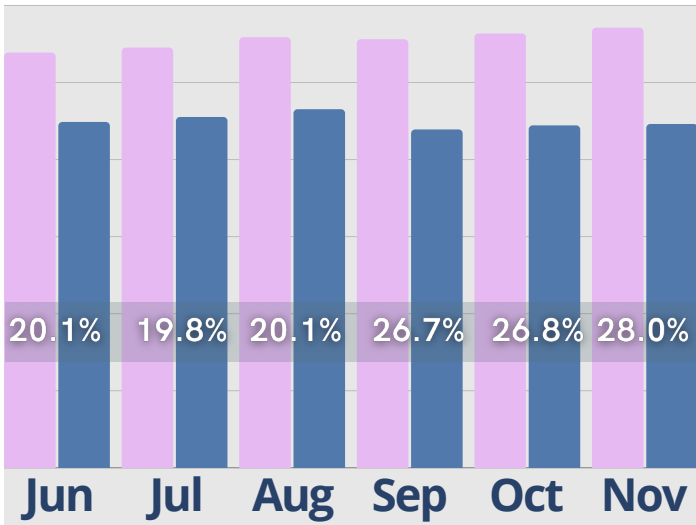


## Incidents

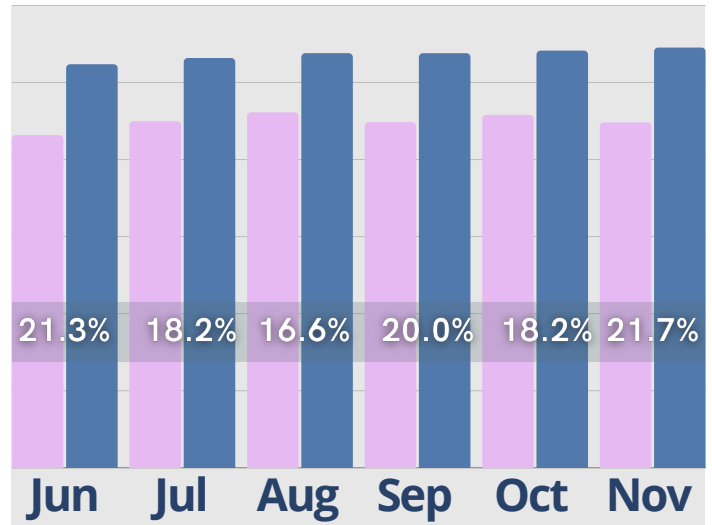


# November Last 6 Months

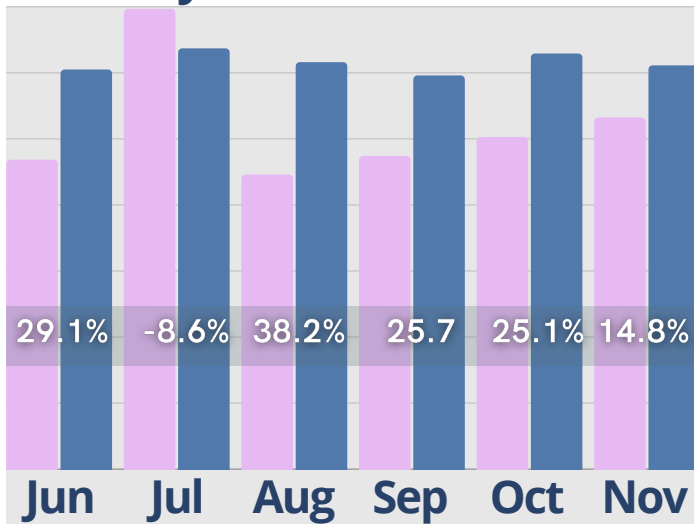
## Rent Roll Summary- Room Rate



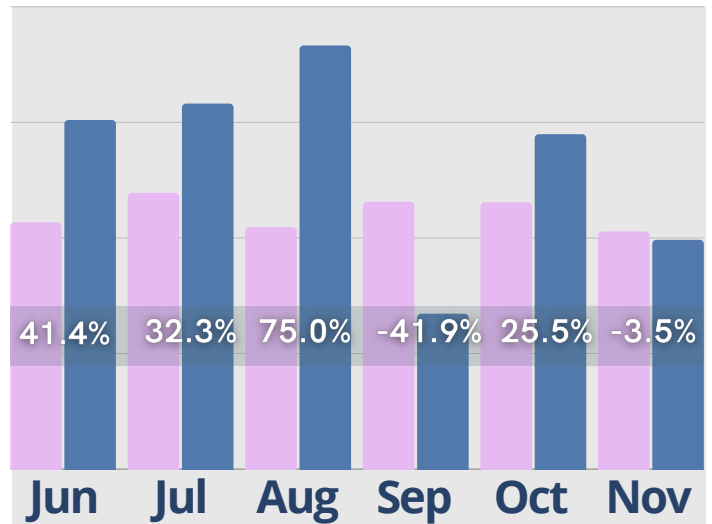
## Rent Roll Summary- Assessment Fee



## Rent Roll Summary- Monthly Fees



## Rent Roll Summary- Service Fee



● Last Year

● Current Year

Copyright © 2024 Move-In Software, Inc. All rights reserved. No part of this report may be reproduced or transmitted in any form without written permission from Move-N Software, Inc.



 **2700-3 Brown Trail  
Bedford, TX 76021**

 **817-282-7300**

 **[www.move-n.com](http://www.move-n.com)**

 **[info@move-n.com](mailto:info@move-n.com)**