

Senior Housing Census and Operations Update



December
2024

Introduction

For more than 28 years, Move-N Software has been focused on creating exceptional software exclusively for the Senior Housing industry, designed to increase census and revenues, and enhance resident care. As the industry has changed and technology has advanced, so has Move-N. Our goal is to give our customers more than they expect. As a service to the industry, we have been providing monthly statistics based on data aggregated from our small, mid-sized and large customers across the US and Canada, so that you may get a sense for how your communities compare to national averages.

The information provided in this update consists of month to month, year to date data comparing the last six months of the previous and current year, as of December 31st..

December Analysis

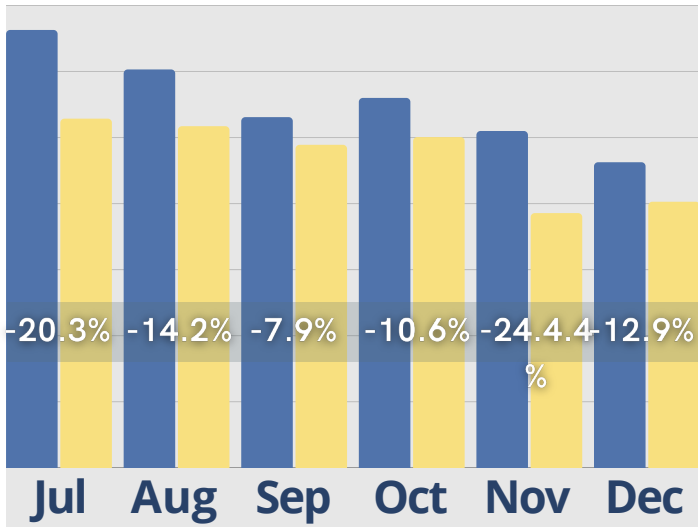
The Senior Housing Census and Operations Benchmark Report for December 2024 provides a comprehensive overview of industry performance metrics for the past six months. Key highlights include trends in move-ins and move-outs, cash receipts, and tour-to-move-in conversion times. Despite a 15.18% decrease in inquiries compared to the previous year, there was notable stability in initial tours, with a minimal 0.13% difference. Cash receipts increased by 27.66%, signaling strong financial inflows. However, move-ins experienced a 10.68% decline, while move-outs rose by 2.86%. Marketing activity fluctuated significantly, showing a mixed impact on outreach effectiveness. Rent roll metrics revealed positive growth across room rates and service fees, contributing to overall revenue gains. The report emphasizes operational dynamics affecting census stability and marketing strategies within senior living communities.

For a more in depth look into this our additional information, reach out to <https://move-n.com/contact-us/>

December Last 6 Months

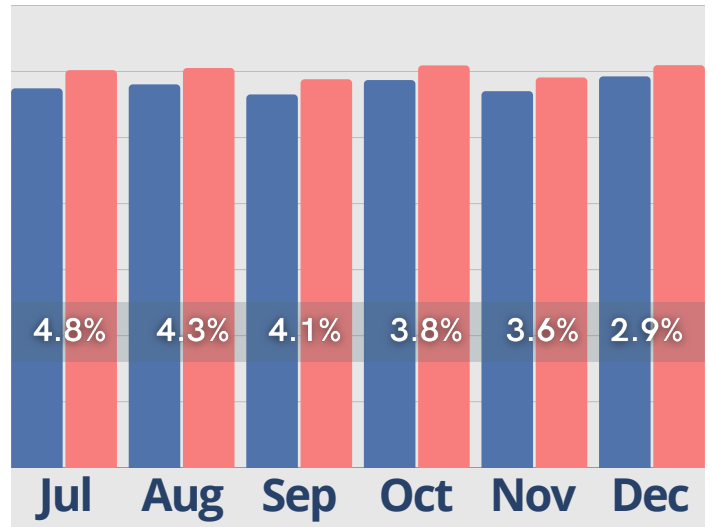
Inquiries

● Last Year ● Current Year



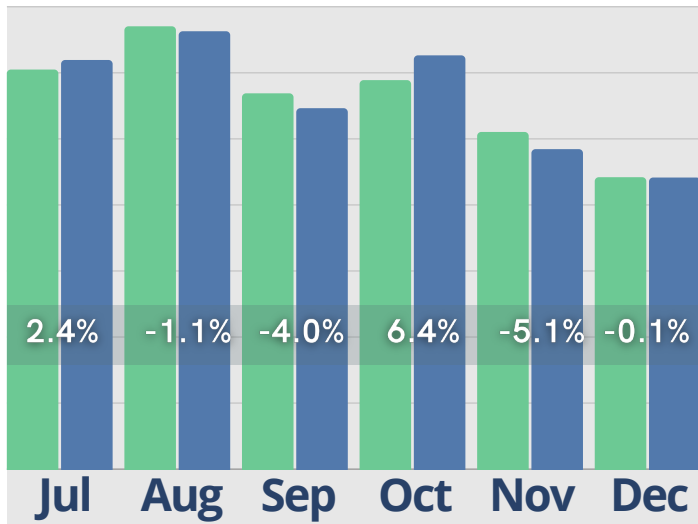
Census

● Last Year ● Current Year



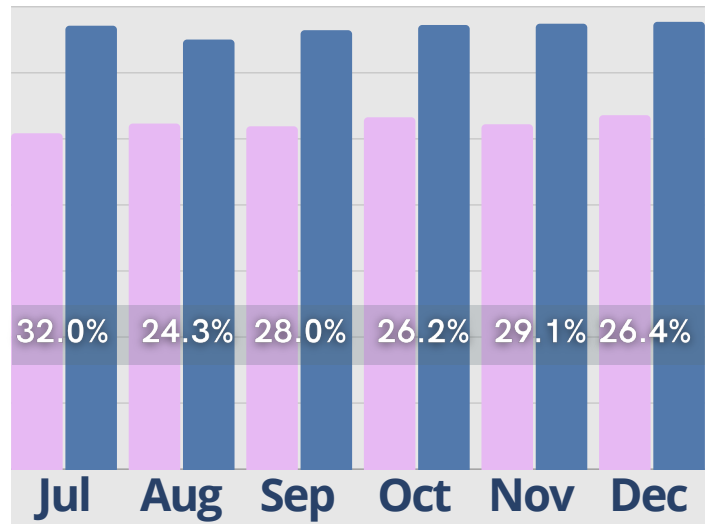
Initial Tours

● Last Year ● Current Year



Cash Receipts

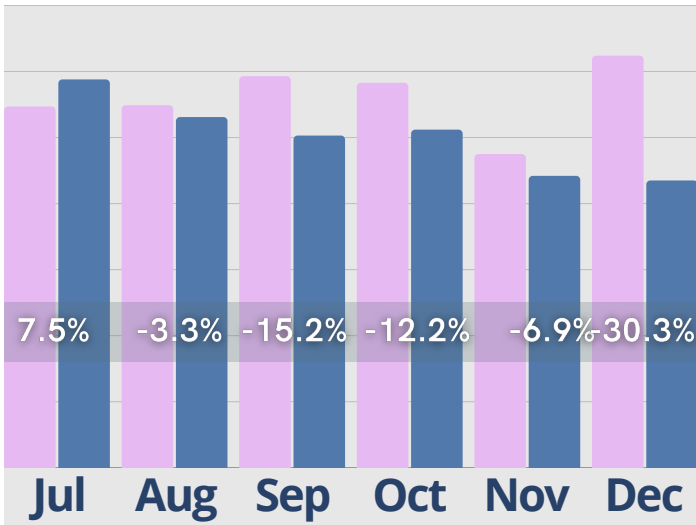
● Last Year ● Current Year



December Last 6 Months

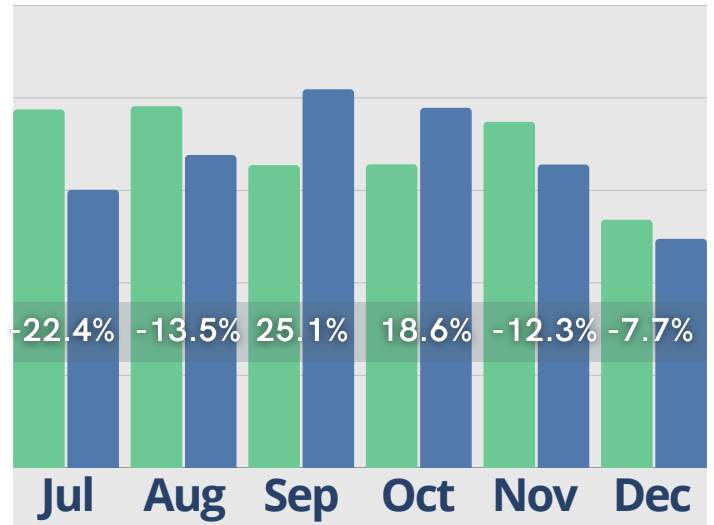
Move-Ins

● Last Year ● Current Year



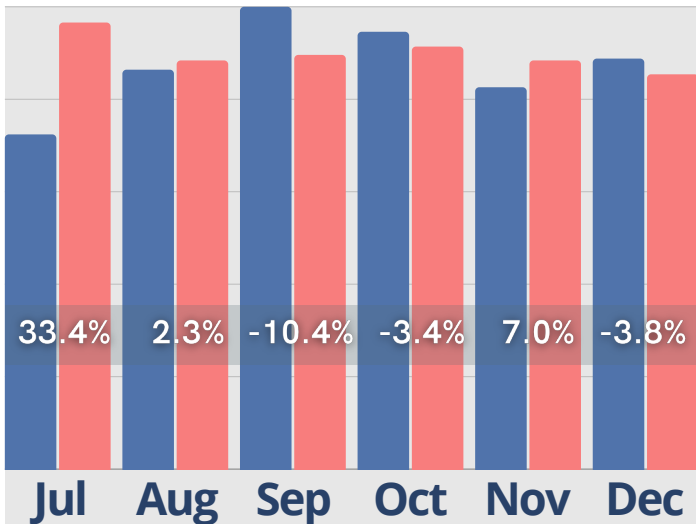
Activity Completed- Inquiry

● Last Year ● Current Year



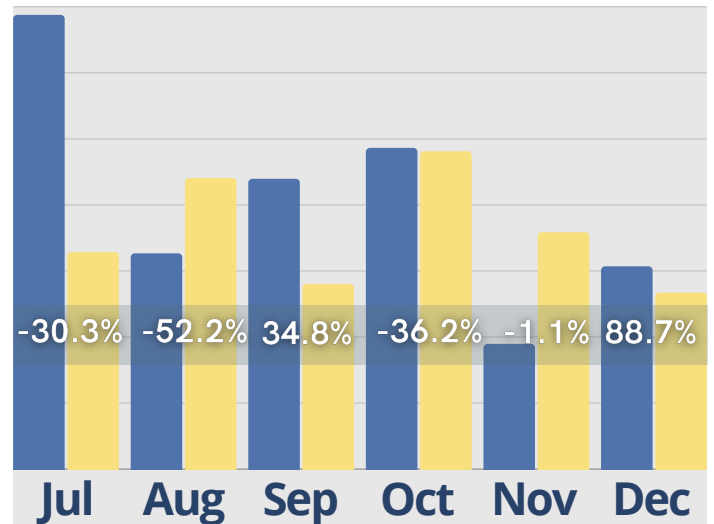
Move-Outs

● Last Year ● Current Year



Activity Completed- Marketing

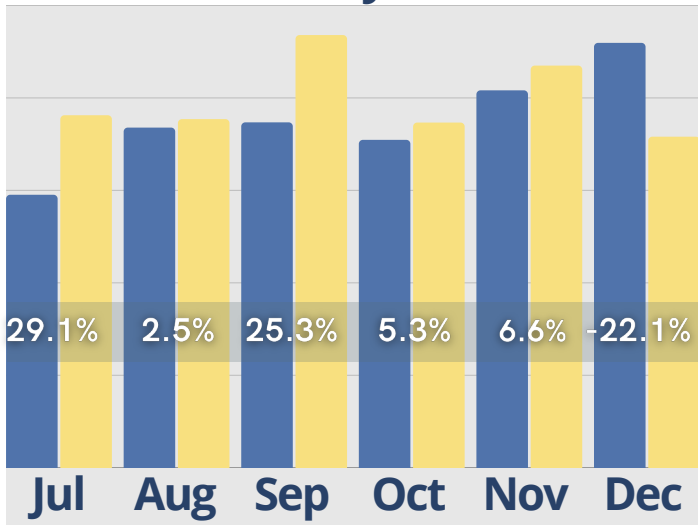
● Last Year ● Current Year



December Last 6 Months

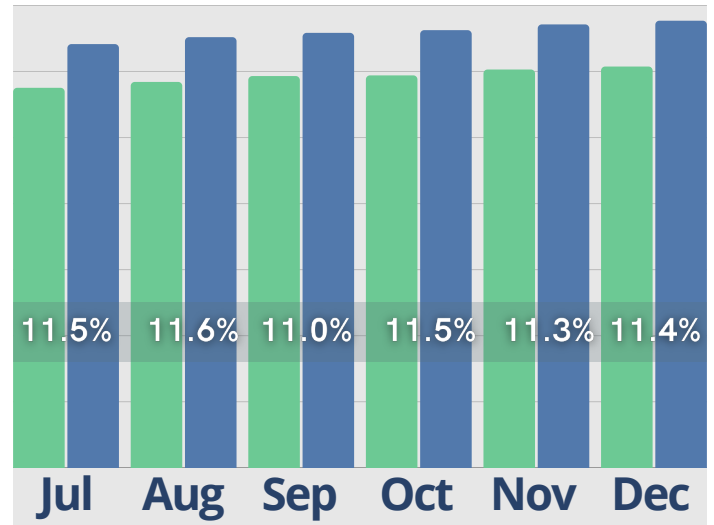
Average Tour to Move-In Conversion Days

● Last Year ● Current Year



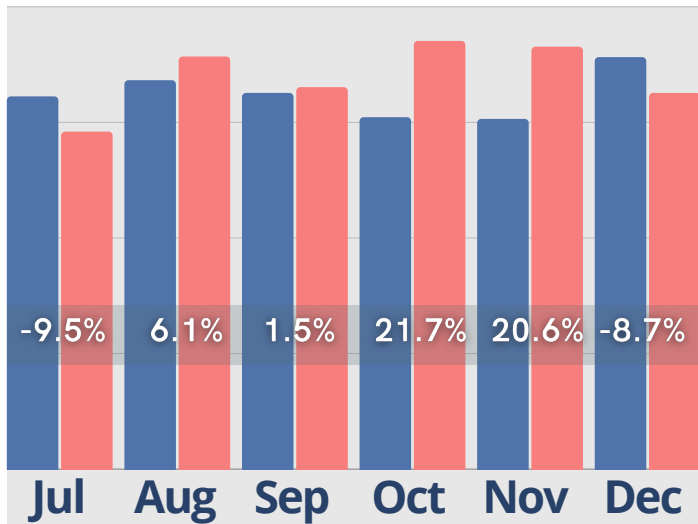
Residents w/ Assessments

● Last Year ● Current Year



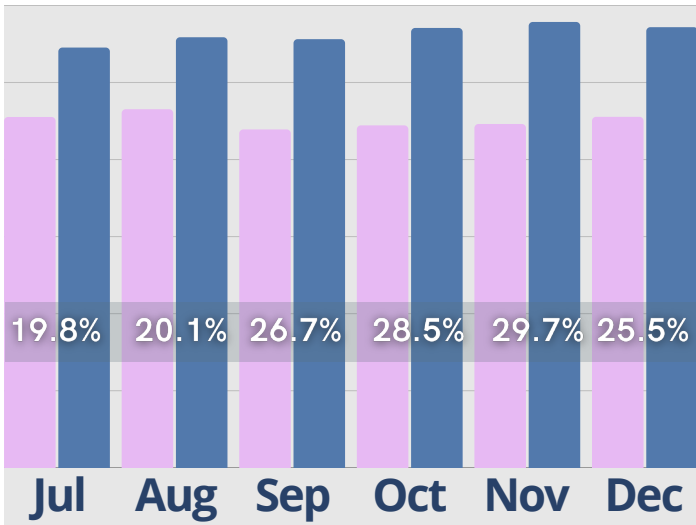
Incidents

● Last Year ● Current Year

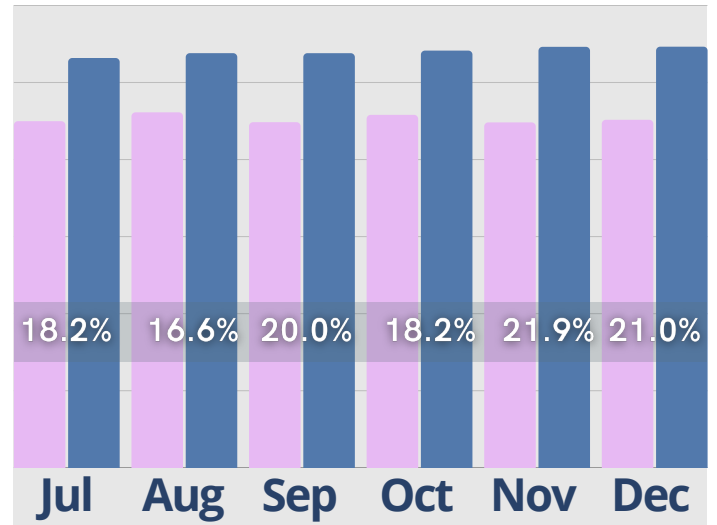


December Last 6 Months

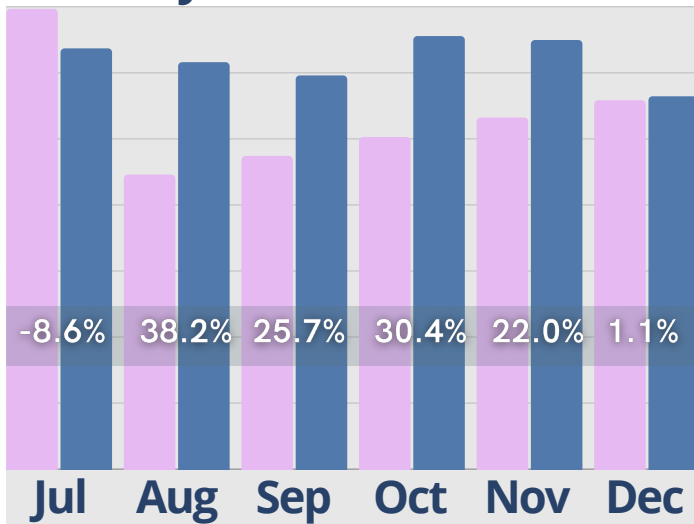
Rent Roll Summary- Room Rate



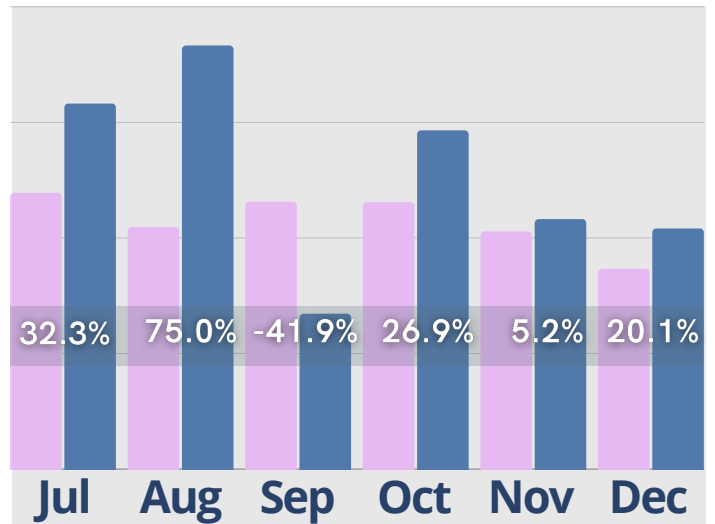
Rent Roll Summary- Assessment Fee



Rent Roll Summary- Monthly Fees



Rent Roll Summary- Service Fee



● Last Year

● Current Year

Copyright © 2024 Move-In Software, Inc. All rights reserved. No part of this report may be reproduced or transmitted in any form without written permission from Move-N Software, Inc.



 **2700-3 Brown Trail
Bedford, TX 76021**

 **817-282-7300**

 **www.move-n.com**

 **info@move-n.com**